

All dimensions to be checked on site. Figured dimensions take preference over scaled dimensions. Any errors or discrepancies to be reported to the Architects. This drawing may not be edited or modified by the recipient.

Copyright and ownership of this drawing is vested in RKD Architects, whose prior written consent is required for its use, reproduction or for publication to any third party. All rights reserved by the law of copyright and by international copyright conventions are reserved to RKD Architects and may be protected by court proceedings for damages and/or injunctions and costs.

RKD Architects' Quality Management Systems are certified to ISO 9001:2015.

Notes:

**UNIT TYPE M1**

- Plot Curtilage
- 3 Bed
- 2 Storey Terrace House

**MATERIALITY KEY**

- (A) Selected Brick Finish
- (B) Selected Render Finish
- (C) Roofing Tile
- (D) Stone Clipping
- (E) Coloured Brick Detail
- (F) Selected Brick Soldier Course
- (G) Opaque Glass
- (H) Solar Panel
- (I) Aluminium Finished Double Glazed Windows
- (J) External Bin Store
- (K) Selected Brick Pattern Detail
- (L) Roof Window
- (M) Selected Finish Cladding Board
- (N) Timber Fence

NOTE: See Architectural Design Statement for selected colours and materials

**M1 - 3 Bed, 5 Person Gable Maisonette Lower**

Name	Target Areas (m <sup>2</sup> )	Proposed Areas (m <sup>2</sup> )
Living Kitchen Dining	34.0 m <sup>2</sup>	41.2 m <sup>2</sup>
Master Bedroom	13.0 m <sup>2</sup>	13.0 m <sup>2</sup>
Bedroom 1	11.4 m <sup>2</sup>	11.9 m <sup>2</sup>
Bedroom 2	7.1 m <sup>2</sup>	7.4 m <sup>2</sup>
Gross Floor Area	90.0 m <sup>2</sup>	122.8 m <sup>2</sup>
Internal area excluding stair void	90.0 m <sup>2</sup>	114.3 m <sup>2</sup>
Aggregate Bedroom	31.5 m <sup>2</sup>	32.3 m <sup>2</sup>
Aggregate Living	34.0 m <sup>2</sup>	41.2 m <sup>2</sup>
Aggregate Storage	9.0 m <sup>2</sup>	9.3 m <sup>2</sup>
Private Amenity	9.0 m <sup>2</sup>	36.3 m <sup>2</sup>

Based on the 'Sustainable Urban Housing: Design Standards for Apartments' (2020)

Rev.	Date	Description
P1	May 2022	Planning Submission

**Beo Properties Ltd.**

STATUS: **PLANNING**

PROJECT: **Ratoath South SHD**

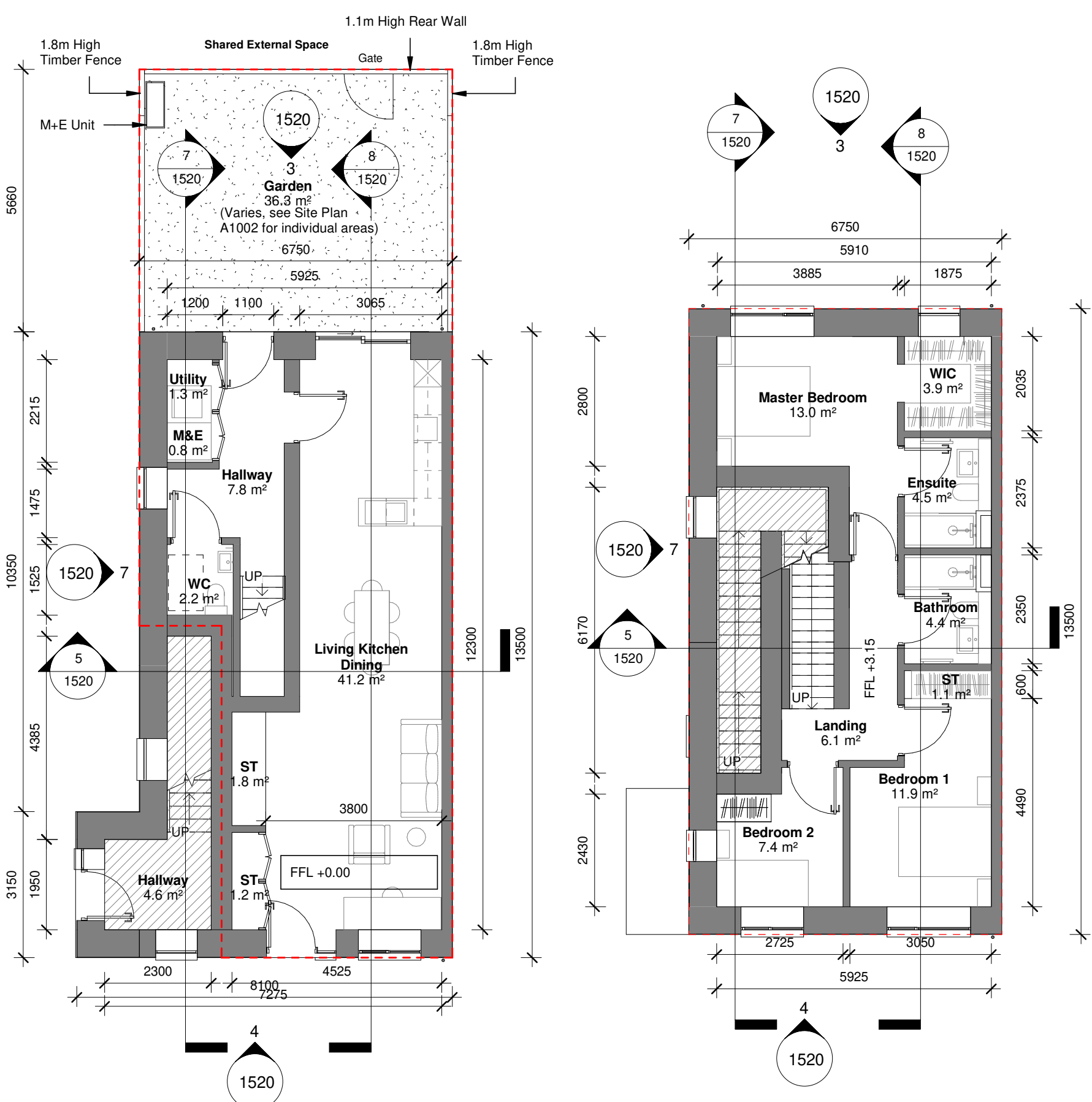
PROJECT ADDRESS: **Ratoath South, Co. Meath**

DWG TITLE: **Maisonette Gable Lower Unit**

DWG NO: **21088-RKD-ZZ-DR-A-1520**

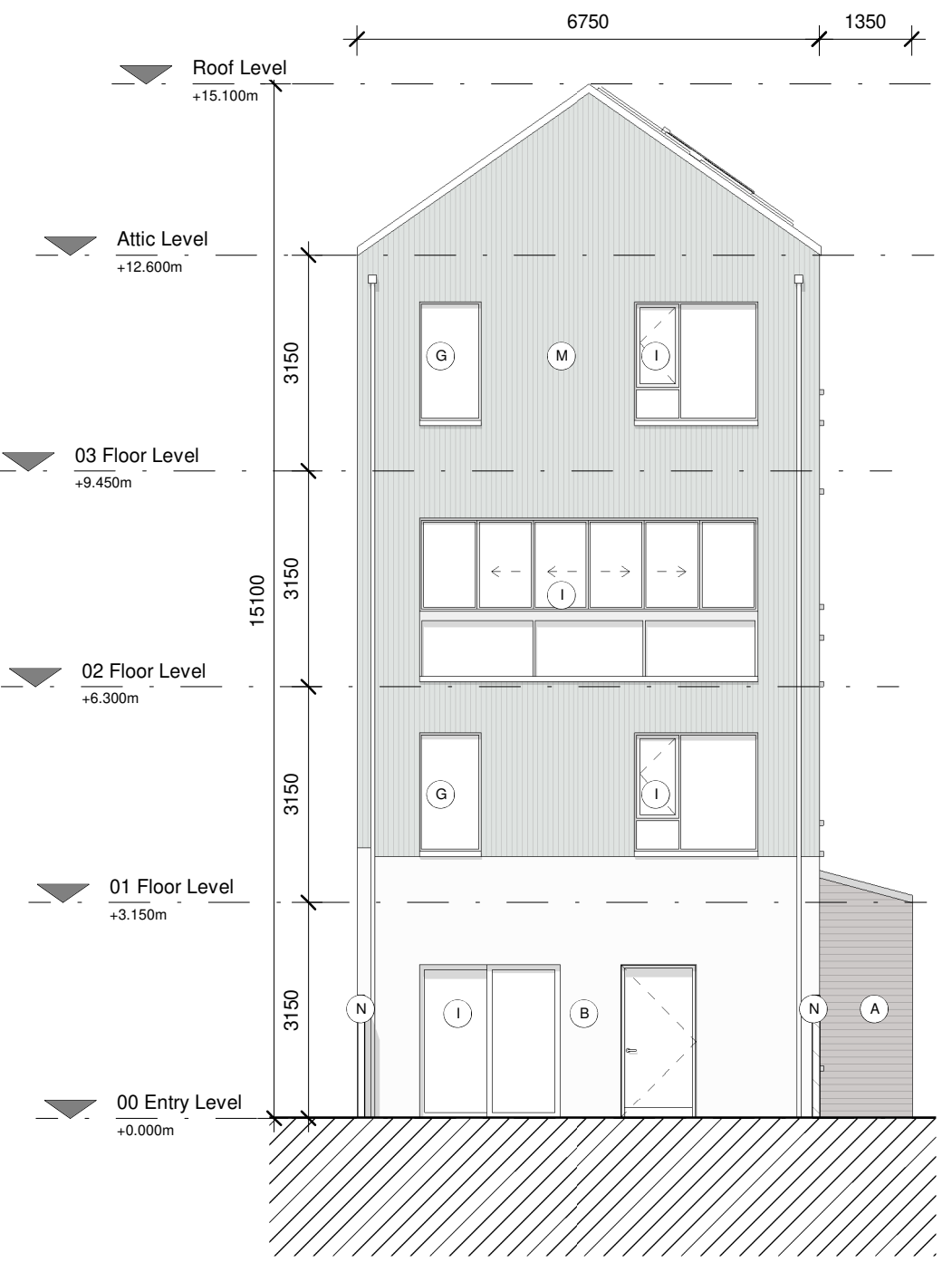
REV.	STATUS	PROJECT NO.
P1	A3	21088

DATE	DRN	CHK
MAY 2022	JB	DC

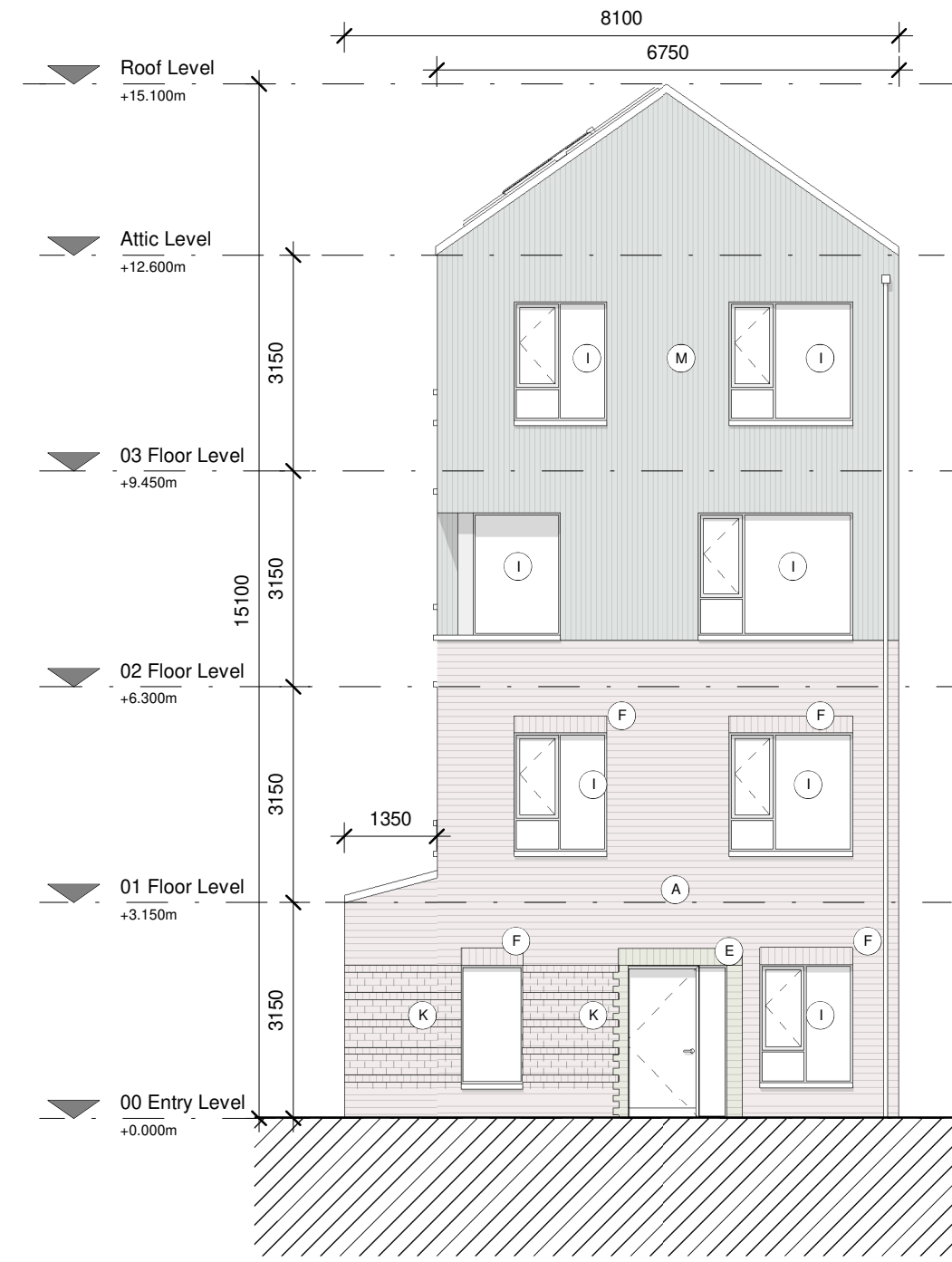


**1 Ground Floor Plan**  
1 : 100

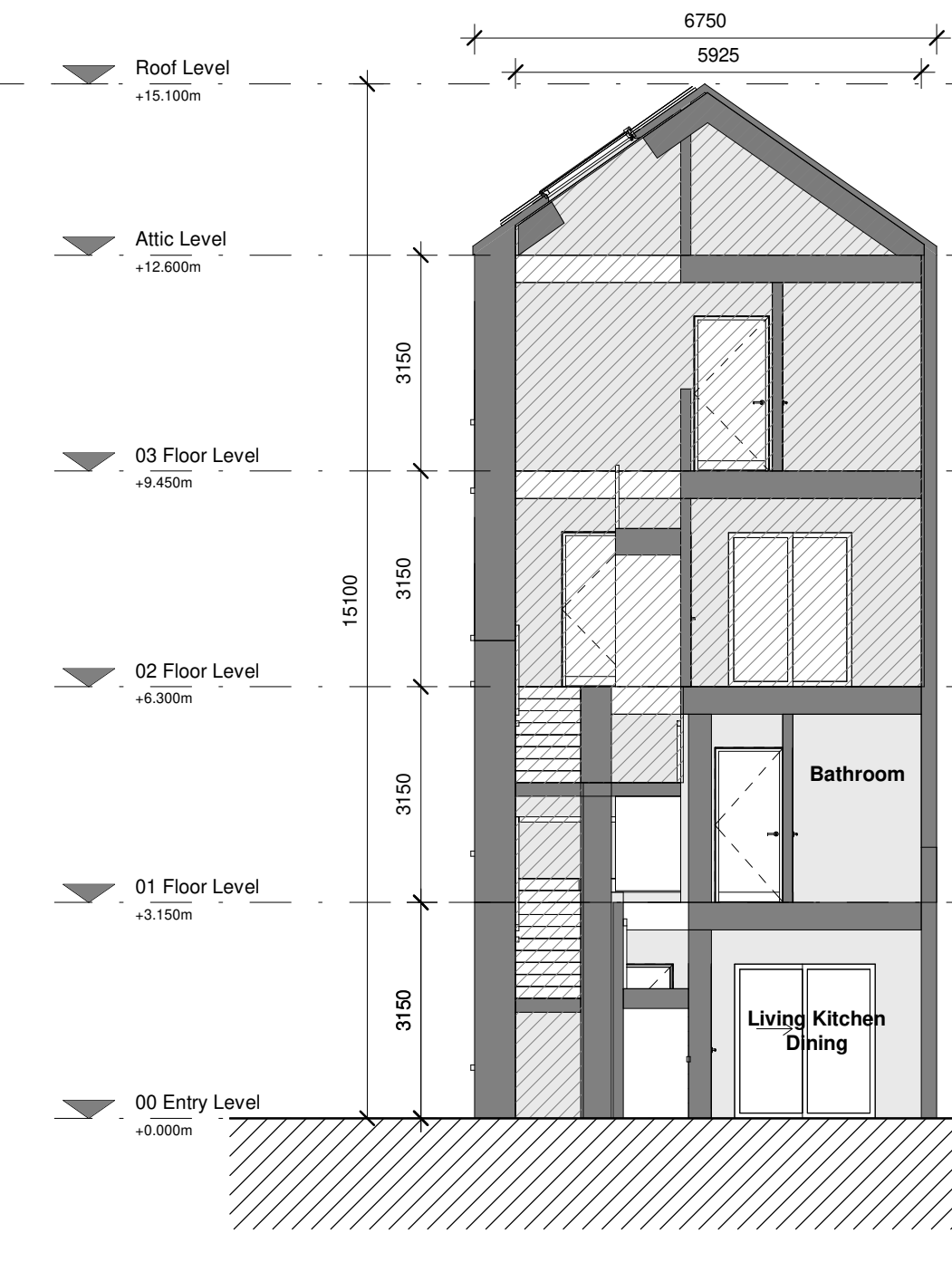
**2 First Floor Plan**  
1 : 100



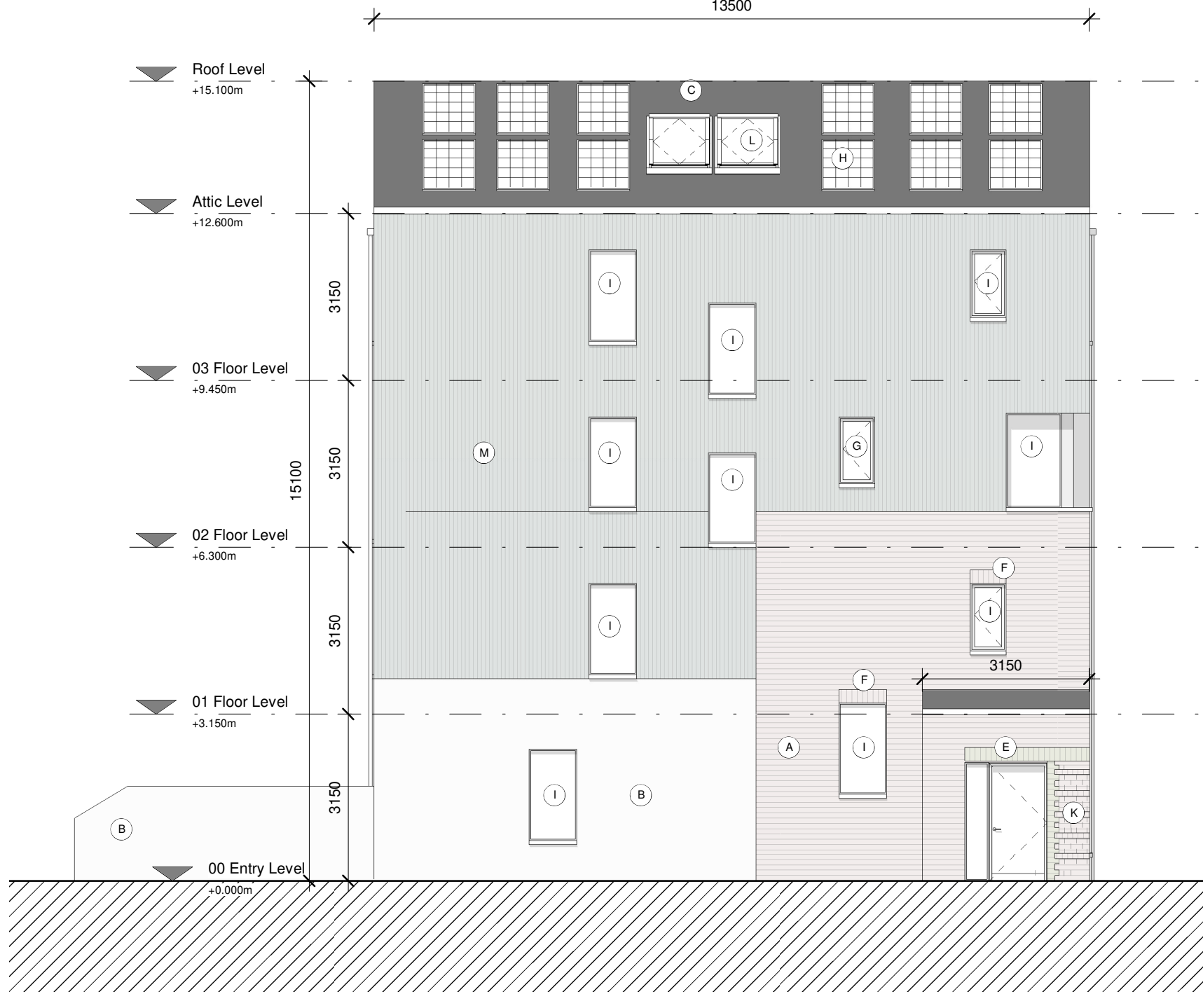
**3 Rear Elevation**  
1 : 100



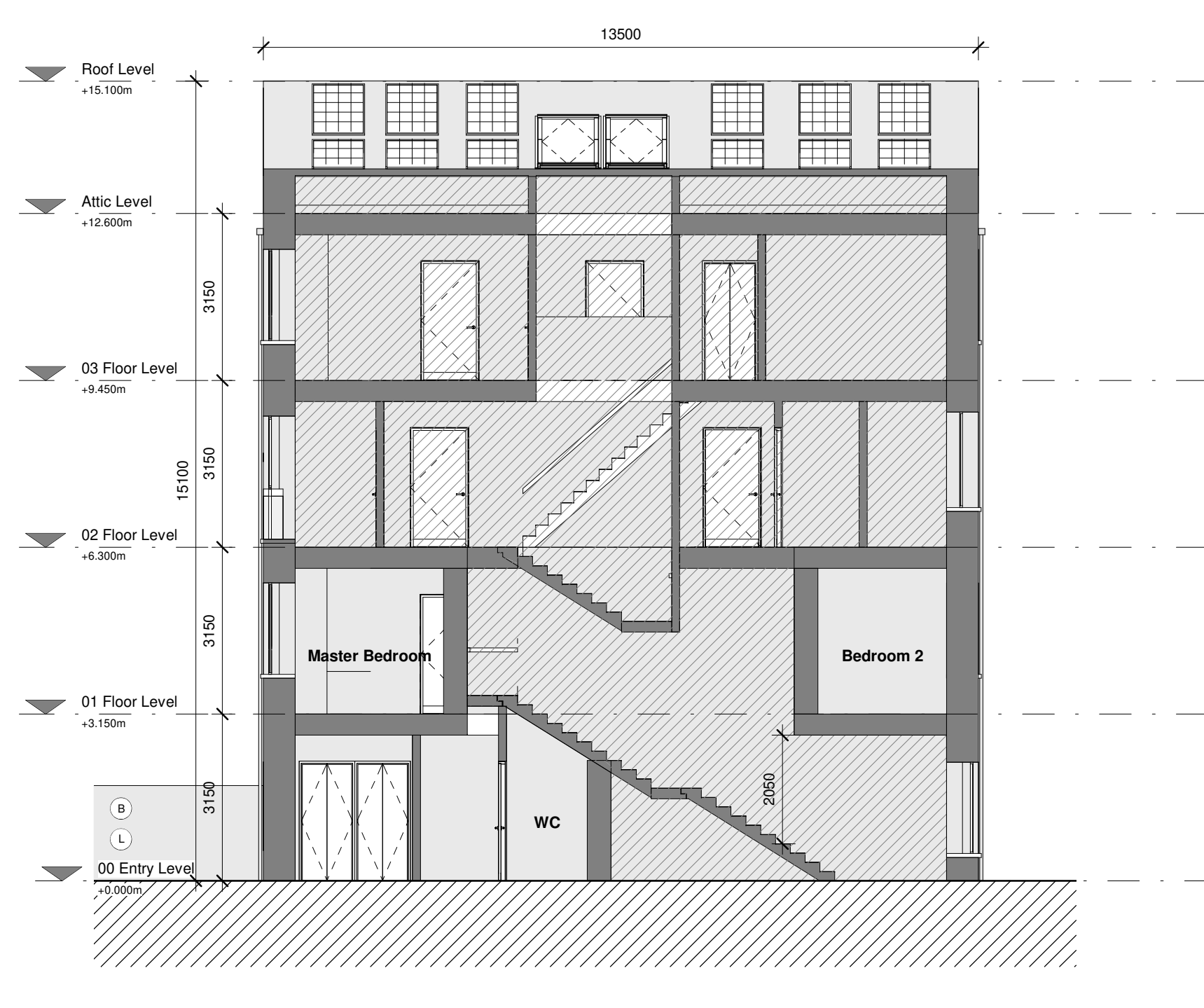
**4 Front Elevation**  
1 : 100



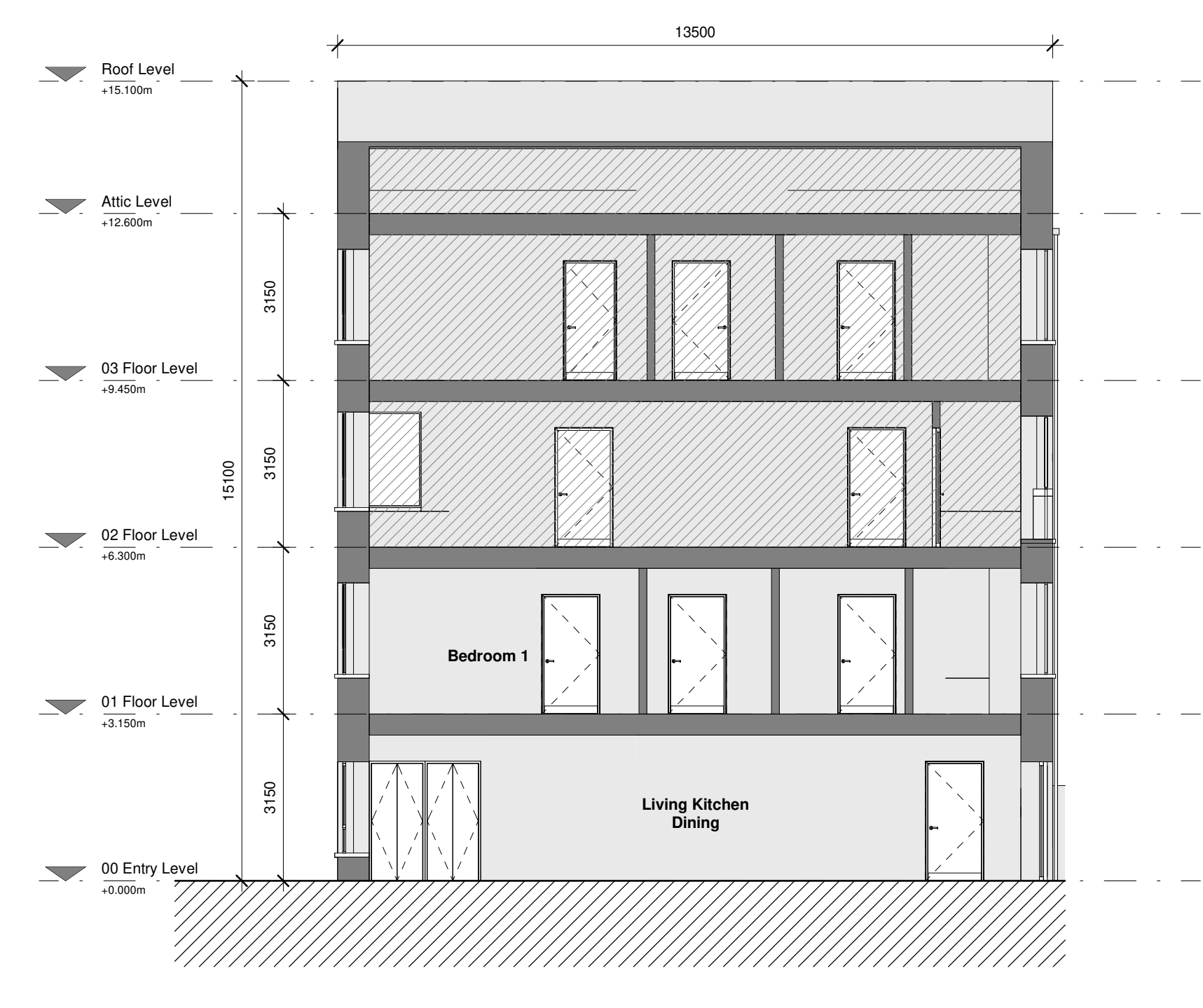
**5 Section A**  
1 : 100



**6 Gable Elevation**  
1 : 100



**7 Section B**  
1 : 100



**8 Section C**  
1 : 100